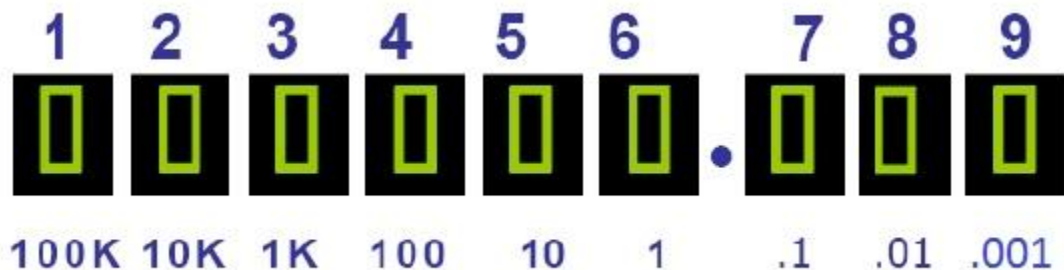


## What does the water meter say?

Your automated water meter provides a visual readout that indicates water consumption, rate of flow, leak detection and reverse flow detection. The following provides details to help you read the meter information used to help troubleshoot water usage or leak issues. To activate the digital display of the meter, perform the following:



1. Activate the LCD readout by shining a flashlight on the sensor. (See photo below)
2. The LCD readout starts up by turning all indicators on. The readout will then switch to normal mode in a few seconds.
3. Normal mode, the 9-digit display cycles every 6 seconds between rate-of-flow (cubic feet per minute) and current meter reading (cubic feet), both are measured to the thousandth of a cubic foot (0.000). To convert to gallons, multiply the cubic feet reading X 7.48.

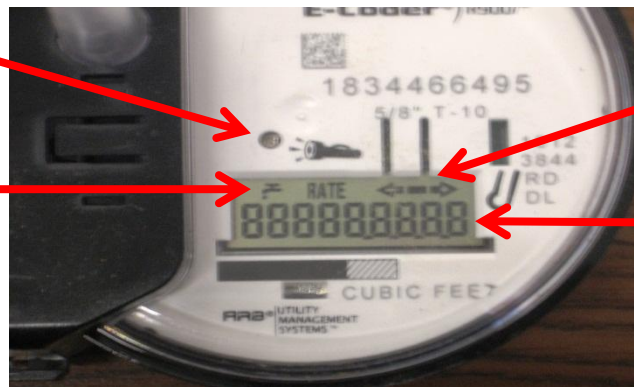


### Other Indicators:

- Flow Direction (Arrows)
  - Right arrow with "+" in the arrow – water is currently flowing normal.
  - Left arrow with "-" in the arrow – water is currently flowing in the reverse direction. (There is an issue if there is reverse water flow. Please call the City Utility Department to help troubleshoot this issue.)
  - Arrow symbol not on – no water flow is currently being detected.
- Leak Indicator (Faucet Symbol)
  - Steady faucet symbol – indicates possible fulltime leak.
  - Flashing faucet symbol – indicates intermittent leak.
  - Faucet symbol not on – no leak is detected.

Shine Flashlight  
Here on Sensor

Leak Indicator



Flow Direction

9 Digit Meter  
Readout