

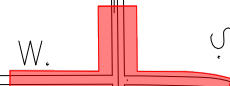

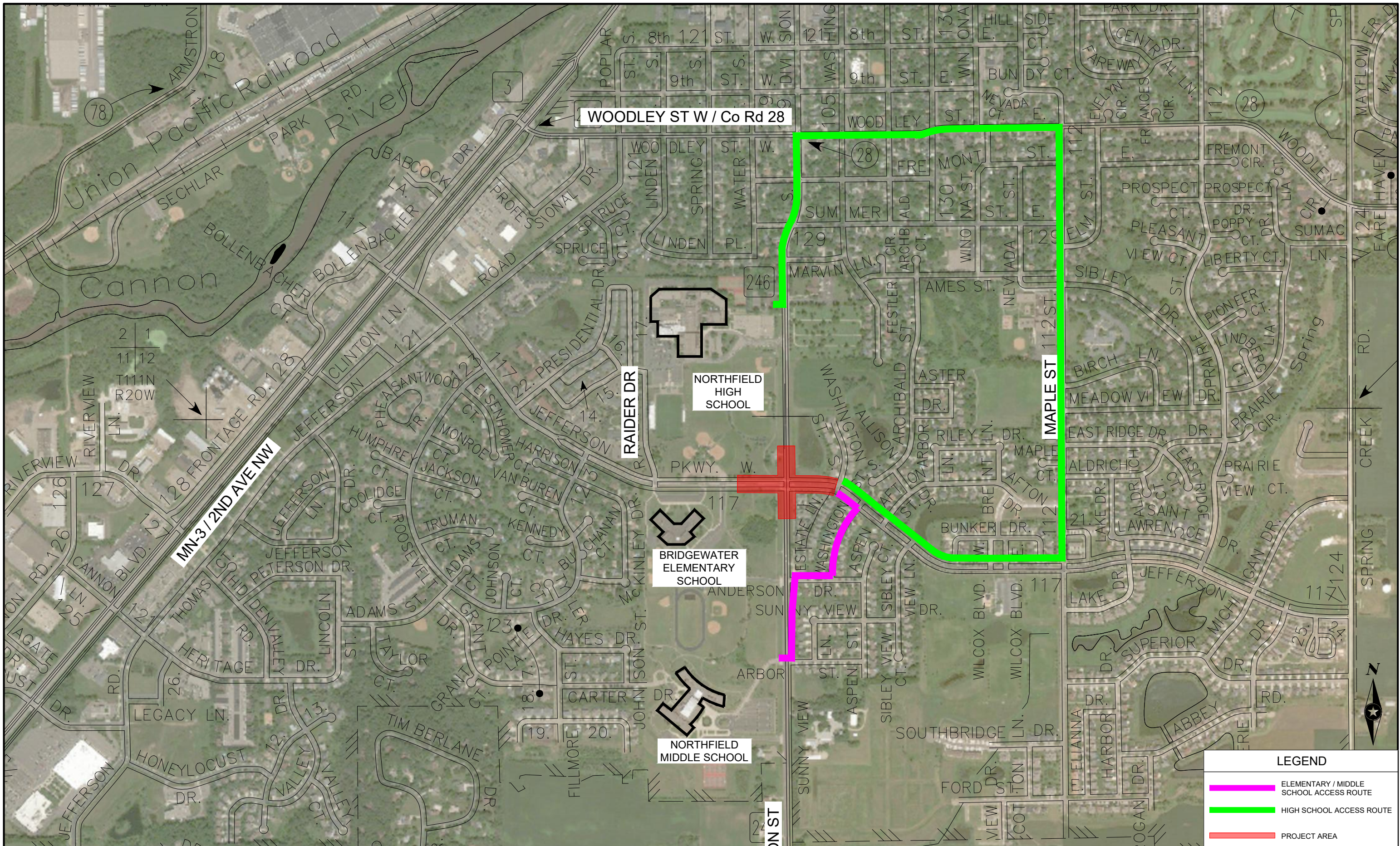


LEGEND	
	ELEMENTARY / MIDDLE SCHOOL ACCESS ROUTE
	HIGH SCHOOL ACCESS ROUTE
	PROJECT AREA

 PHONE: 952.912.2600 10901 RED CIRCLE DRIVE, SUITE 300 MINNETONKA, MN 55343 www.sehinc.com	FILE NO.	PEDESTRIAN DETOUR MAP
	DATE:	






WOODLEY ST W / Co Rd 28

MN-3 / 2ND AVE NW

NORTHFIELD HIGH SCHOOL

BRIDGEWATER ELEMENTARY SCHOOL

NORTHFIELD MIDDLE SCHOOL

LEGEND	
	ELEMENTARY / MIDDLE SCHOOL ACCESS ROUTE
	HIGH SCHOOL ACCESS ROUTE
	PROJECT AREA

SEH
 PHONE: 952.912.2600
 10901 RED CIRCLE DRIVE,
 SUITE 300
 MINNETONKA, MN 55343
 www.sehinc.com

FILE NO.
 DATE:

PEDESTRIAN DETOUR MAP